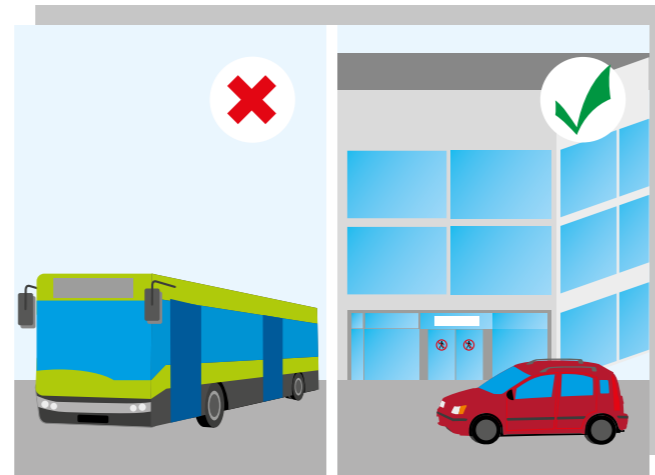


CARE FOR THE PEOPLE'S SAFETY

WE HAVE TAKEN THE FOLLOWING SAFETY MEASURES IN THE OFFICES:



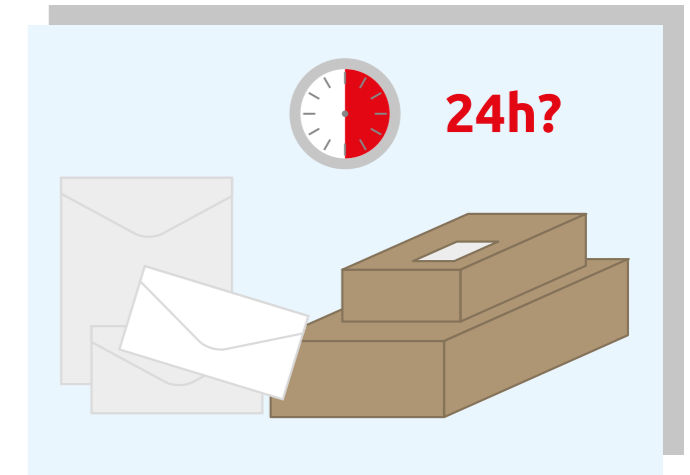
Office entrance/exit.
Temperature measurements.



Individual transport recommended.



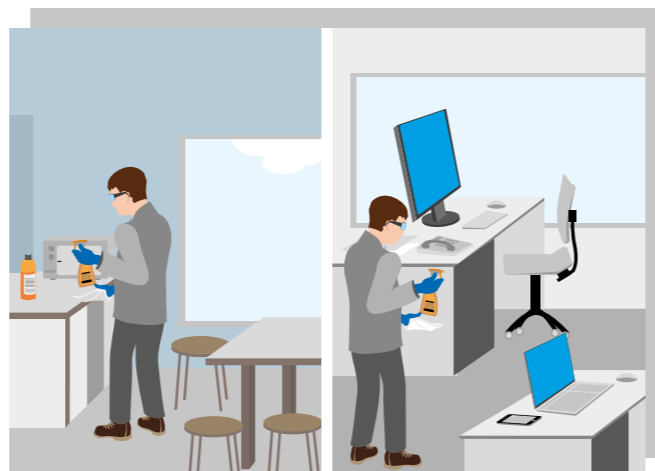
Disinfectant. Read the information leaflets,
follow the rules.



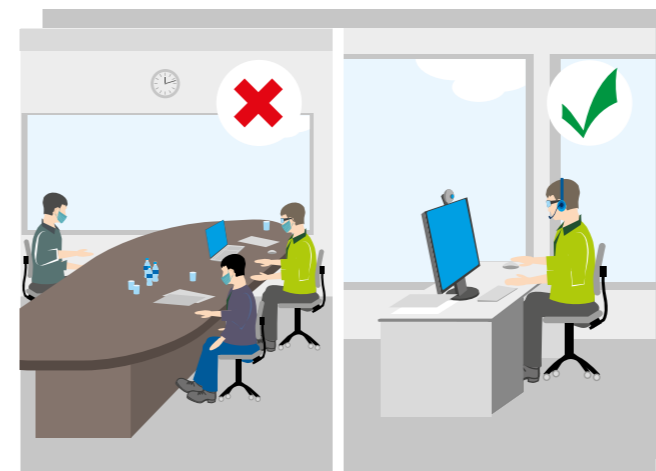
Quarantine for packages and letters.



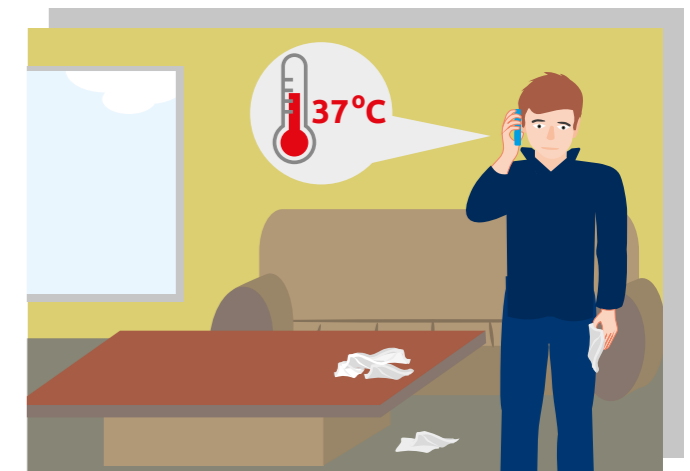
Organization of workstations keeping
a distance of 1.5 m from each other.
Teleworking. Work in turns.



Daily disinfection.



Limiting contacts with third parties.
Meetings in a form of video conferences.



If you feel unwell, be responsible – report it
to your supervisor.

**BE RESPONSIBLE FOR YOUR SAFETY AND
THE SAFETY OF YOUR COLLEAGUES**



A lift can be used by max. 2 people in
a mask.